

**communities**of*excellence*<sup>2026</sup>

National Learning Collaborative

# TAKE YOUR COMMUNITY TO THE NEXT LEVEL THROUGH A BIG PICTURE APPROACH

The Communities of Excellence National Learning Collaborative provides multi-sector groups with a facilitated roadmap for leadership development, communitywide collaboration, and data-driven decision making and action planning to improve outcomes.



# WHAT IS THE COLLABORATIVE?

The Communities of Excellence National Learning Collaborative is a three-phase program that includes communities from across the country learning and sharing together. With the guidance of facilitators and mentors, they work in their respective communities to grow community engagement and visible progress towards community performance excellence that improves outcomes in the areas of health, education, economy, housing, and other key aspects of quality of life.



## WHAT YOU WILL EXPERIENCE

- 1. Guided support** to adopt the Communities of Excellence Framework as your roadmap to build your cross-sector collaborative team, its leadership skills, and achieve meaningful, equitable, and accelerated social impact through strategic thinking and action.
- 2. Leadership training** in systems thinking, team building, listening, collaborative decision-making, and other critical skills we all need to ensure the capacity within our communities to succeed in this work.
- 3. Data scorecard and decision support** to understand your community, believe that you are making the best decisions possible for your residents, know what's working and track progress, and successfully tell the stories that need to be told.
- 4. Mentorship and connections to other leaders** through a network of participating communities and experienced community development and Baldrige professionals.

### A Systems Approach in Communities



## KEY TAKEAWAYS

### PHASE 1

- Community Excellence Group Initial Vision, Values, Brand Identity, and Early Communication Tools Planned or Developed
- Community Assets Mapped
- COE Common Community Scorecard Toolkit including a Customized Digital Dashboard Implemented
- Community Listening Project Completed to Identify Initial Action Project
- First Baldrige-based Community Profile Completed
- COE Progress Self-Assessment Completed

### PHASE 2

- Community Excellence Group Current and Ideal Leadership Structure, Systems, and Processes Defined
- Strategic Action Plan Developed for Your Initial Action Project(s)
- Tools Created and Used for Communicating with Your Leadership, Residents and Other Stakeholders, and People Resources,
- COE Progress Self-Assessment Completed

### PHASE 3

- Updated Vision, Integrated Communications Plan and Tools for Communicating with Your Community and Community Excellence Group
- Experience of Implementing Your Strategic Action Plan for Your Initial Action Project(s)
- Comprehensive Multi-Year Strategic Plan for Action and Ensuring Leadership Capacity and Capability Developed
- Balanced Scorecard for Your Community Excellence Group and Community Developed
- COE Progress Self-Assessment Completed

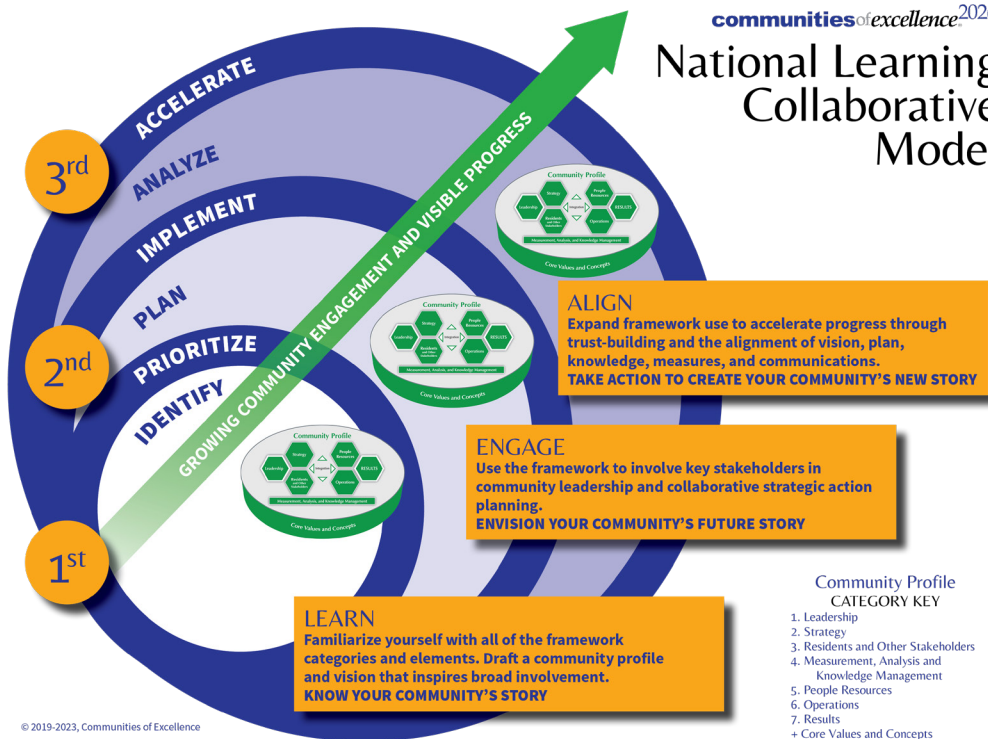
### ALUMNI

- Access to new tools, resources, and promising practices in sessions and in the COE online portal that are updated with the new 2023-2024 revision of The Communities of Excellence Framework.

# A WORTHWHILE INVESTMENT IN A HIGH-PERFORMING TEAM FOR YOUR COMMUNITY'S SUCCESS!

communitiesofexcellence<sup>2026</sup>

## National Learning Collaborative Model



© 2019-2023, Communities of Excellence

Take our **FREE**  
Getting Started  
Readiness  
Assessment

at <https://communitiesofexcellence2026.org/what-we-do/learning-collaborative/>.

**SIGN UP AND PAY FOR ALL THREE PHASES AT ONCE AND RECEIVE A 10% SAVINGS!**

Phase 1 - \$25,000/year  
Phase 2 - \$25,000/year  
Phase 3 - \$25,000/year

**STAY ENGAGED!**

**Alumni Network - \$2,000 or \$5,000/year with a mentor and two COE Fall Conference registrations.**

### Participation costs include the following from **Communities of Excellence Experts and Partners:**

- Leadership Skills Workshop
- Hands-ons Guidance from COE Faculty and your own Mentor on implementing the COE Framework
- 2 COE Fall Conference registrations
- COE Common Scorecard Toolkit including the COE Digital Dashboard customized for your community
- Strategic Planning, Process Design, Storytelling, and other key support methodologies matched to your group's readiness level and need
- Communities of Excellence Framework and Detailed Journey Roadmap (10 printed copies)
- Tools and Worksheets for every step of the journey
- Access to a 2-hour monthly online session with your phase cohort and a 1-hour monthly Special Topic All Cohort session taught and facilitated by the COE Faculty Team
- Access to a 1-hour monthly meeting with a COE mentor
- Access to the COE online portal of recordings, promising practice examples, and more!



# WHY WORK TOGETHER IN COMMUNITIES?



**America faces great challenges as we approach the year 2026 – the 250th anniversary of our nation’s founding.**

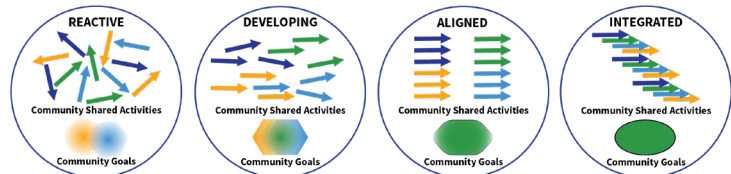
Every year, we invest trillions of dollars and untold hours attempting to improve our health, education, and economic opportunities. Despite this huge investment, many U.S. communities struggle to provide adequate health care, education, and jobs to their residents and are ill-prepared for natural, environmental, economic, or other disasters.

The COVID-19 crisis has demonstrated how important it is to work together. Competition for resources, siloed activities across sectors, and duplication of efforts across organizations and businesses are just a few of our many challenges. Communities benefit from a systematic approach familiar to and used by all entities within their communities that ensures federal, state, local, and private sector efforts are aligned and integrated to maximize their benefit and impact.

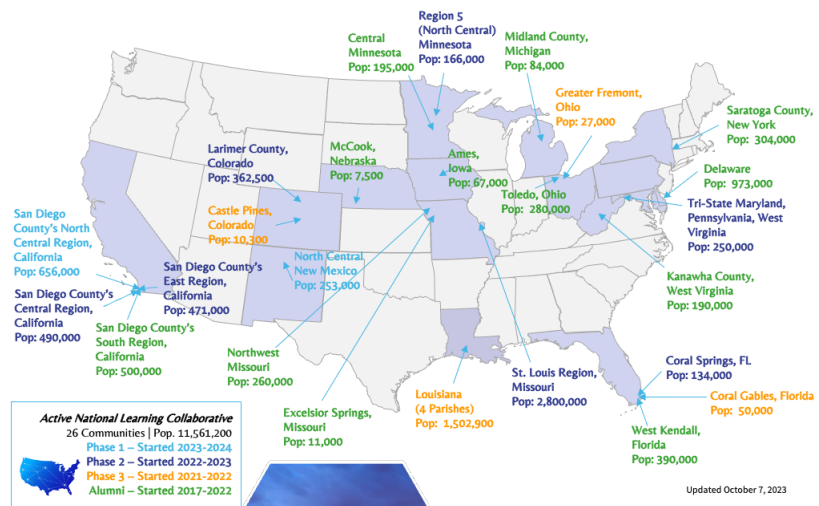
**An approach exists to address these issues at a community level!**

The Communities of Excellence Framework and National Learning Collaborative guides leaders in applying systems-thinking and performance excellence concepts and values to their multi-sector collaborative work.

This framework is being used by 26 communities in 15 states representing a collective population of over 11,000,000 people as a roadmap to addressing their most pressing problems. It is based on criteria developed by the Baldrige Performance Excellence Program. For 32 years, the Baldrige Program at NIST has provided a framework to enable and achieve a systems approach to excellence within organizations, generating an estimated \$1 billion in economic benefit annually. Now, they are partnering with Communities of Excellence 2026 as a private sector partner to do the same for entire communities.



## communities of excellence<sup>2026</sup>



Contact us today to learn more:

Executive Director Stephanie Norling  
 snorling@communitiesofexcellence2026.org

[www.communitiesofexcellence2026.org](http://www.communitiesofexcellence2026.org)

