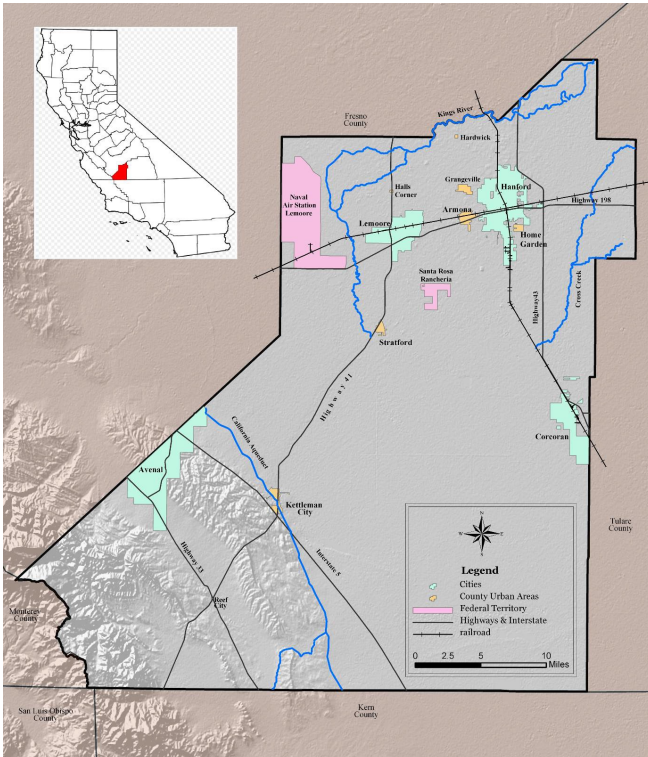


COMMUNITY PROFILE

Community Description

P.1a - COMMUNITY ENVIRONMENT

P.1a(0) What geographic areas are included in your community?



The County of Kings is located in the south-central portion of the San Joaquin Valley California and is comprised of 1,391 square miles. The map depicts Kings County's relationship to nearby counties, and provides a bearing of the primary urban locations found throughout the County.

Kings County is one of eight counties that comprise the San Joaquin Valley, which is bounded on the west by the Coastal Range; the Sierra Nevada Mountain range to the east; the Tehachapi's to the south; and Sacramento to the north. The central and eastern portions of the County occupy the relatively flat valley floor; the southwestern portion is characterized by the low hills and intervening valleys of the Kettleman Hills.

The San Joaquin Valley supports extensive farmland practices resulting in Kings County remaining predominantly an agricultural area since its first settlement in the 1850's. Kings County's farmland is

generally level irrigated land that averages well over \$1 billion a year in commercial crop production. Kings County is ranked as the 8th leading agricultural county in California (25th in the nation), and is in the top 15 milk producing counties in the nation.

Climate during the winter in Kings County is dry and mild with the high temperature ranging from 55 to 65 degrees. Fog is not uncommon during the winter months and may settle for up to two weeks. Summer in Kings County is dry and hot with average daytime July and August temperatures hovering just below 100 degrees. Annual precipitation is approximately ten inches.

LOCATION	Central San Joaquin Valley California	BORDERING COUNTIES	Fresno, Tulare, Kern, San Luis Obispo, and Monterey
TOTAL AREA	1,391 miles ²	AGRICULTURAL LAND	890,000 acres
AVG. TEMPERATURE	January - High 57° / Low 36° July - High 100° / Low 69°	AVG. ANNUAL RAINFALL	9 inches (U.S. average is 38 inches)

Table P.1a(0) .A – Geographic Area

P.1a(0) (continued) - What is your community's shared identity?

Kings County residents share a love for **faith and family**, connection to the **agricultural community**, pride for our **military**, respect for the **Central Valley** region, and strength in **generations**. The Central Valley is well known as the “breadbasket of the nation” and that identity is carried with pride. With an agricultural tradition that is strongly connected to the land, residents have a deep appreciation of generational heritage and wisdom. The arrival of NAS Lemoore came an influx of military personnel from all over the nation, and the community has embraced them and integrated them, seeing them as valued partners and family.

P.1a(0) (continued) - What are your community's key offerings in the areas of health, education, the economy, and quality of life?

	KEY OFFERING	RELATIVE IMPORTANCE
HEALTH	<ul style="list-style-type: none"> • Extensive hospital and clinic system • Rural healthcare • City Parks and Recreation Departments • County-wide Health Department and Behavioral Health Services • Navy Morale, Welfare, and Recreation Department • Social capital (generational heritage) • Health service agencies collaboration 	<p>A 142-bed hospital is in Hanford offering Emergency Services, Surgical Services, Intensive Care, Obstetrics, Orthopedics, imaging, and laboratory testing. In addition, there are Rapid Care, Same Day Care and Urgent Care sites available for less urgent needs. Naval Air Station Lemoore has a small hospital that provides care for the base residents. Throughout Kings County there are also twenty Rural Health Clinics.</p>
EDUCATION	<ul style="list-style-type: none"> • Two community colleges • Trade schools and private colleges • Satellite campuses • Parochial and charter schools • Head Start and Early Education • First 5 Kings County • Santa Rosa Rancheria Education Dept 	<p>Access to education is a top priority in Kings County with over fifty schools in operation, including a high school in every incorporated city and elementary schools in most unincorporated rural areas. Adult education programs are also offered, and Lemoore and Hanford are each home to community college campuses.</p>
QUALITY OF LIFE	<ul style="list-style-type: none"> • Quiet communities with less traffic • Close to mountains, beach, big cities • Generational traditions with strong family values/ties • New shopping, dining, and entertainment options in Hanford 	<p>Kings County offers a small-town feel with access to a wide variety of amenities. With a new shopping plaza in Hanford centering around Costco, the community is growing and welcoming new opportunities.</p>
FINANCIAL STABILITY	<ul style="list-style-type: none"> • Agriculture Community (over \$2 billion in Ag Crops and Products in 2016) Top Commodities include: <ul style="list-style-type: none"> ○ Dairy, Cotton, Cattle and Calves, Pistachios, Almonds, Tomatoes, Walnuts, Corn, Grapes, Peaches • Manufacturing Community • Military Community (NAS Lemoore) • Corrections Community (two state prisons and substance abuse treatment) • New Offerings include: <ul style="list-style-type: none"> ○ Faraday Future ○ Kelly Slater Surf Ranch 	<p>Agriculture is the key driver of the local economy. The area produced \$2.47 billion in ag commodities in 2014, ranking it 8th among all California counties. Another huge driver is Lemoore Naval Air Station, the largest strike fighter base in the world, which houses both the F/A-18 strike fighter jet and the military’s newest strike fighter, the F-35C jet. The California Department of Corrections and Rehabilitation has several state prisons within Kings County housing approximately 9,000 inmates. There are approximately 5,000 uniformed and civilian staff that support these facilities, the majority of which live in Kings County.</p>

Table P.1a(0).B – Key Offerings

P.1a(1) - What are your community's shared programs and services in the areas of health, education, the economy, and quality of life?

SHARED PROGRAMS AND SERVICES

	HEALTH	EDUCATION	FINANCIAL STABILITY	QUALITY OF LIFE
Christian Leaders Network - A gathering of Christ-centered pastors and church leaders focused on mutual encouragement and prayer, community engagement, and resource connection				X
Diabetes Coalition – Coalition for Diabetes education and awareness. Members discuss how to empower and provide the tools and information to help individuals and families take charge and live a healthier lifestyle.	X			
Hanford Chamber of Commerce – To encourage and promote positive, balanced business and industrial growth and retention; and provide a program of action that meets the evolving needs and challenges of the community			X	
KARELink System of Care - A system of whole person care designed to assist Kings County residents who could benefit from having a case manager for accessing any combination of services	X			
Kings County Breastfeeding Coalition – The mission is to promote Breastfeeding as optimal nutrition in a supportive community environment	X			
Kings County Economic Development Corporation - Kings EDC staff assists businesses with location and expansion needs.			X	
Kings County Job Training Office - Part of America’s Job Centers of California network, a collection of access points to match potential workers with available jobs, and assist workers to gain the skills needed to succeed			X	
Kings Partnership for Prevention (KPPF) - "Inspiring Healthy Life Choices" KPPF is a coalition in Kings County that works to create an environment of wellness throughout our community	X	X	X	X
Kiwanis – With three local chapters, Kiwanis is improving the world by making lasting differences in the lives of children.				X
Lemoore Chamber of Commerce - Lemoore Chamber of Commerce to be the leader for building sustainable economic growth, advocating for a pro-business climate and enhancing Lemoore’s working relationships			X	
Lions - Lions meet the needs of local communities and the world every day because they share a core belief - to serve their community.				X
Rotary - The Rotary Clubs of Kings County include: Avenal, Corcoran, Hanford, Hanford Sunset, and Lemoore.				X
Safe Kids Kings County - The mission of Safe Kids Kings County is to reduce unintentional childhood injury through a multifaceted strategy of public awareness, education, public policy advocacy, and community action.	X			X
Soroptimist - Volunteer Women’s Organization for Business and Professional women who work to improve the lives of women and girls.				X
Summer School and Summer Lunch Programs – Lunch offered throughout the summer at multiple schools in Kings County	X	X		
Vacation Bible Schools - a form of religious education which focuses on children. Churches throughout the county hold week-long summer events.		X		X

Wellness Bridge - KCWB is a community collaborative bridge to wellness for people with behavioral health issues who are homeless or at risk..	X	X	X	X
Kings Young Professionals – Open to anyone wanting to be part of a network to support new and future leaders in the community			X	X

Table P.1a(1) - Shared Programs and Services

P.1a(2) - What are your community's stated mission, vision, and values?

MISSION, VISION, VALUES				
MISSION: To enhance the quality of life in Kings County by creating a collaborative community that focuses on health, family, education, and financial stability.			VISION: Building a healthy Kings County: where all generations flourish!	
VALUES:	Partnership	Stakeholders work across sectors to better the County and achieve common goals	Safety	Safe Kids Day is held annually to educate first graders on bicycle safety, fire safety, water safety, handwashing, CPR, etc
	Growth	Since 2009, Kings County population has grown from 129,477 to 152,982	Tradition	Families have a strong connection to the land and an appreciation for the wisdom of all generations
	Respect	Admiration comes in many forms: for elders, for service men/women, for family	Excellence	Kings County does not want to settle; instead it looks to surpass its potential

Table P.1a(2).A – Mission, Vision, Values

P.1a(2)(continued) - What are your community's core competencies, and what is their relationship to your mission?

CORE COMPETENCIES (and how it relates to the mission)	
Agricultural Based Economy	In 2017, Agriculture and Manufacturing made up 27% of employment in Kings County, second only to Government at 32%.
Large Rural Healthcare System	Kings County has twenty rural health clinics providing primary care to elderly and low-income populations in designated rural areas. In 2010, 72% of primary care visits for Medi-Cal patients were to RHC (rural health clinic) or FQHC (federally qualified health center) facilities.
Family Connection	Over 55% of Kings County persons are Hispanic/Latino. A collectivist culture with strong family values, this importance of belonging is passed down from generation to generation.
Resource Conservation	The Resource Conservation Element identifies natural resources throughout Kings County and establishes guiding policies for the conservation, development and utilization of these resources.
Military Partnership	NAS Lemoore is the Navy's newest and largest Master Jet Base. In 2017, the first F-35 pacific training squadron was established.

Table P.1a(2).B – Core Competencies

P.1a(3) - What key community groups and segments are involved in accomplishing your community's mission and vision and delivering its offerings?

COMMUNITY GROUPS AND SEGMENTS									
	HEALTH	EDUCATION	FINANCIAL STABILITY	FAMILY		HEALTH	EDUCATION	FINANCIAL STABILITY	FAMILY
211 / Kings United Way	X	X	X	X	Kings Community Action Organization	X	X	X	X

Adventist Health	X			X	Kings County Behavioral Health	X			X
Anthem Blue Cross	X			X	Kings County Department of Public Health	X			
California Health Collaborative	X	X			Kings County Job Training Office			X	
California Highway Patrol Hanford				X	Kings County Library				
Central California Asthma Collaborative	X				Kings County Office of Education				
Champions Recovery Alternative Programs	X	X	X	X	Kings County Probation				X
City of Avenal Parks and Recreation				X	Kings County Sheriff's Office				X
City of Lemoore			X	X	Kings Partnership for Prevention			X	X
Episcopal Church of the Saviour Soup Kitchen				X	Kings View				X
Fleet and Family at Naval Air Station Lemoore	X	X	X	X	Koinonia Church				X
Kings County District Attorney's Office				X	Leprino Foods			X	
Kings County Economic Development Corp.			X		Owens Valley Career Development			X	
Kings County Human Services Agency		X	X	X	Santa Rosa Rancheria Education Department				X

Table P.1a(3) – Community Groups and Segments

P.1a(3) (continued) - What recent changes has the community experienced in its needs for these community groups and segments?

The organizations listed in Table P.1a(3) play an active role in Flourish Kings County through the Steering Committee, Advisory Board, or involvement with Kings Partnership for Prevention. The most recent changes that have affected the needs of community residents are climate, immigration, healthcare, and military expansion. The recent drought had a major impact on the economy, air quality, regulations, and access to water. The migrant workers have had a harder time finding work due to the drought, and with the state of the political environment many are not accessing services due to fear of deportation. In the military community, the F-35 jet at NAS Lemoore has brought new housing developments and potential business growth. With the implementation of the Affordable Care Act in 2014, the community saw a significant expansion of healthcare services.

P.1a(4) - What major facilities, infrastructure, and resources (e.g., technology, housing, transportation, and natural resources) support your community's key offerings?

MAJOR FACILITIES, INFRASTRUCTURE, AND RESOURCES

HEALTH	<ul style="list-style-type: none"> • 1 Acute Care Hospital • 14 Community Health Clinics • 1 Cancer Treatment Center • 4 Urgent Care Centers • 2 Offices of Military & Veterans Affairs • 1 Child Welfare Services • Public Health Clinic 	FINANCIAL STABILITY	<ul style="list-style-type: none"> • Beco Dairy Automation • Bennett & Bennett • Costco • Del Monte Foods • Faraday Future • Government Agencies • Hanford Grain Company
---------------	--	----------------------------	---

	<ul style="list-style-type: none"> • 5 Behavioral Health Services & Alcohol/Drug Treatment Centers • 7 Transitional Housing Programs • 3 Family Resource Centers • 1 Aging and Independence Services 		<ul style="list-style-type: none"> • Health Care Organizations • Helena Chemical CO. • Hotel Development • Kings County Economic Development Corp. • Kelly Slater Surf Ranch • Kings County Job Training Office • Kings Waste & Recycling Authority • Leprino Foods • Marquez Brothers International • Naval Air Station Lemoore • OLAM • Pitman Family Farms • Tachi Palace • Target • Walmart Distribution
EDUCATION	<ul style="list-style-type: none"> • 14 School Districts • 6 High Schools • Charter Schools • 2 Community Colleges • 7 Libraries • 5 Employment Career Centers • 4 Community Education Programs 	FAMILY	<ul style="list-style-type: none"> • Youth and Adult Sports • Affordable Housing • 24 Parks • City and County Law Enforcement • 2 Civic Auditoriums • Wide variety of Church Denominations

Table P.1a(4) Major Facilities, Infrastructure, and Resources

A critical asset of the community has always been its central location within the state and the supporting transportation modes. Located approximately between the state’s two major north-south highway corridors, Interstate 5 and State Route 99, Kings County provides excellent access to the growing California market. Over 200 major carriers provide interstate freight service to community businesses. The main lines of the Burlington Northern Santa Fe (BNSF) railway and San Joaquin Valley Railroad also intersect in Hanford, serving multiple users in the 1,000-acre Kings Industrial Park and Leprino Foods in Lemoore. Hanford, the community’s largest city, is also home to the fourth busiest Amtrak station along the north-south Amtrak San Joaquin rail corridor which provides convenient and timely access to both Southern California and the Bay Area. California has invested millions of dollars for the California High Speed Rail Authority. Kings County has seen construction begin on a high-speed rail line which will connect it to Southern California, the Bay Area, and Sacramento. The community’s key offerings will be supported and expand exponentially through this venture. Residents of the community will gain access to additional education, employment, and recreational opportunities without having to relocate.

P.1a(5) – What are the key aspects of the regulatory environment under which your community operates?

REGULATORY ENVIRONMENT	
Lemoore City Council	Health Care Center Boards
Hanford City Council	Community Based Organization Boards
County Agricultural Commissioner	Kings County Association of Governments
Kings County Board of Supervisors	Corporate Laws
Hanford Chamber of Commerce	School District Boards
Lemoore Chamber of Commerce	US Customs and Immigration Services

Hospital Boards	US Health and Human Services (HIPAA)
Housing Authority	Downtown Boards
Water Districts	Community Development Agency

Table P.1a(4) Major Facilities, Infrastructure, and Resources

P.1b - COMMUNITY RELATIONSHIPS

P.1b(1) - Who are your community leaders?

COMMUNITY LEADERS

<i>Communities of Excellence Leadership Structure</i>	<i>County-wide Leadership Structure</i>
<p>Steering Committee: As the driving force of the COE initiative since the beginning, the diverse community representation on the COE Steering Committee has been essential to success. Organizations at the table include Adventist Health, Kings Partnership for Prevention, Behavioral Health, Public Health, Koinonia Church, City of Lemoore, Champions, and Leprino Foods.</p>	<p>Formal Community Leaders include all City and County Elected (and some non-elected) Officials such as: City council members, County Supervisors, Sheriff, District Attorney, Assessor, City Managers (not elected), County Administrative Officer (not elected), Chiefs of Police (not elected), School Superintendents, and School Boards.</p>
<p>Advisory Board: Expanding upon the diversity of the Steering Committee, this group will bring more wisdom to the table as they meet to review the programmatic work and decisions of the Steering Committee moving forward.</p>	<p>Informal Community Leaders are more difficult to identify but include: Tachi tribal council, Faith Based leaders, Industrial and Commercial leadership, Adventist Health leadership team, Chamber of Commerce leadership, NAS Lemoore Commanding Officer, Executive Directors of Non-Profit Organization, Large Agricultural entities, Service Club leaders, and key community leaders.</p>
<p>Community Partners and Friends: Showing support and staying updated on the mission, Community Partners and Friends will be essential in deploying and communicating the plan.</p>	<p>Community Organization Leaders include across-silo coalitions such as Kings Partnership for Prevention.</p>

Table P.1a(4) Major Facilities, Infrastructure, and Resources

P.1b(1) - What collaborative leadership structure do they use in leading your community?

The Communities of Excellence group has continued to expand through intentional outreach to both formal and informal community leaders. These individuals represent every sector of the community including – healthcare, faith community, government, non-profits, business, agriculture, and education. Flourish Kings County is now on the radar of almost every key leadership figure in the community. This has laid the foundation and strategically positioned the group for the next steps in the process of building a Community of Excellence.

P.1b(2) - What are your community's key resident groups, other customer groups, and stakeholder groups? What are their key requirements and expectations for your community offerings, and for resident and other customer support services?

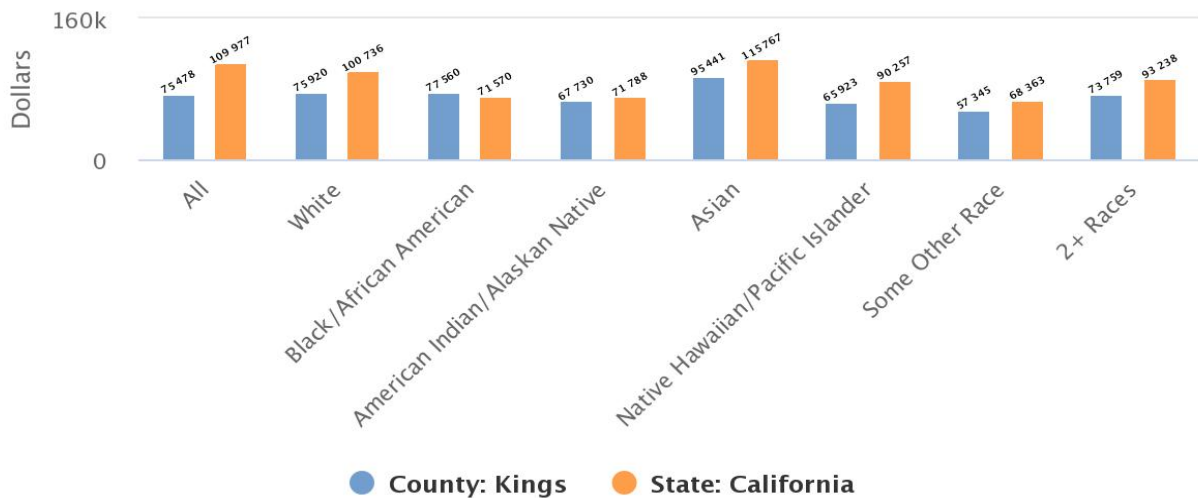
RESIDENT GROUPS AND REQUIREMENTS

Category	Key Groups, Population Segments	Key Requirements and Expectations
<i>Residents</i>	<ul style="list-style-type: none"> Hispanic/Latino (55% of Kings County residents) Non-Hispanic/Latino (45% of Kings County residents) Migrant/farm workers 	<ul style="list-style-type: none"> Clean air, water and food Access to healthy food Infrastructure (e.g. roads)

	<ul style="list-style-type: none"> • Military (active duty, retired and dependents) • Senior Citizens • Children and Youth 	<ul style="list-style-type: none"> • Schools • Healthcare and access to services • Parks
Other Customers	<ul style="list-style-type: none"> • Tachi Casino/leisure • Commuters • Surrounding Prison systems 	<ul style="list-style-type: none"> • Trains and Roads • Community Services
Stakeholders	<ul style="list-style-type: none"> • Surrounding Communities • Agriculture owners and workers • Dairy producers and workers 	<ul style="list-style-type: none"> • Partnership and communication • Regulations • Taxes • Labor force

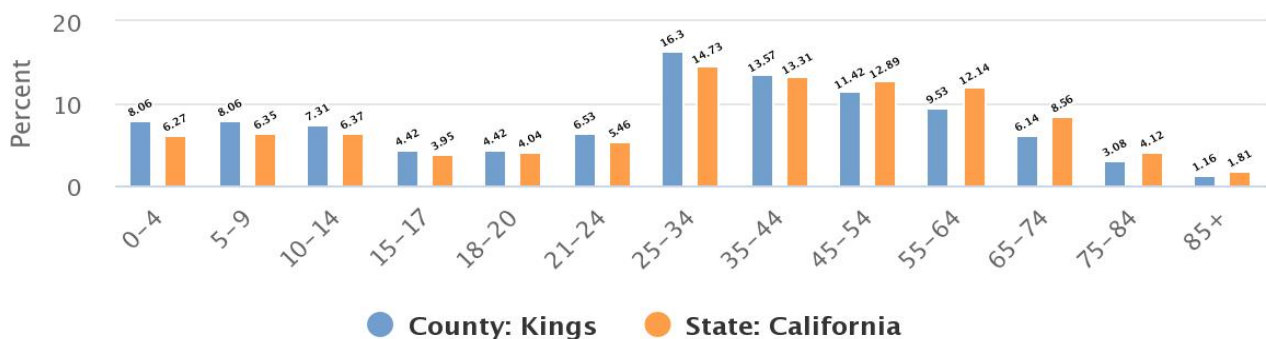
Table P.1b(2) – Resident Groups and Requirements

Average Household Income by Race County: Kings



Claritas, 2019. www.kpfp.org

Population by Age Group County: Kings



Claritas, 2019. www.kpfp.org

P.1b(2)(continued) - What are the differences in these requirements and expectations among resident groups, other customer groups, and stakeholder groups?

While there is a lot of similarity in the requirements across categories, the differences lay primarily in how these groups expect them to be prioritized. The disagreements in prioritization can be attributed to the demographic differences within each group.

P.1b(3) - Who are your community's key suppliers, partners, and collaborators? Identify as many individual community groups and their associated functions/needs.

KEY SUPPLIERS, PARTNERS, AND COLLABORATORS	
<i>Key Suppliers/ Partners/ Collaborators</i>	<i>Associated functions/needs (Including but not limited to)</i>
<i>Adventist</i>	After hours care, cancer care, medical offices, breast care, diabetes care, emergency care, home care, hospice care, intensive care, rehabilitation services.
<i>KCAO</i>	Head Start, Domestic Violence and Sexual Assault services, food and nutrition, utility assistance, child care assistance, housing assistance, youth services
<i>Champions</i>	Outpatient services, residential services, sobering residences, parenting classes, domestic violence classes, anger management classes, case management
<i>County</i>	Sheriff/Jail services, Superior Court, Sheriff, Human Services, Auditor, Finance, District Attorney's office, Probation/Juvenile Hall, Behavioral Health
<i>City</i>	City parks, utilities, city events, kings county fairgrounds, city council, economic development, city development, public works, police department
<i>School districts</i>	Education, High Schools, Elementary Schools, Jr. High Schools, school events
<i>Sheriff</i>	Community safety, patrol, jail, law enforcement, security for the Superior Court, school resource officers
<i>City Police Departments</i>	Community safety, patrol, jail, law enforcement, security for the Superior Court, school resource officers
<i>United Way</i>	Local workplace campaign, 211, HMIS
<i>KPEP</i>	Emotional/Behavioral/Mental Health wellness workgroups, collaboration with other community partners, Kings County demographic data
<i>Family Healthcare Network</i>	Medical, dental, optometry, behavioral health, nutrition, pharmacy, self-support services, health education, walk-in services
<i>Hanford Mall</i>	Retail, commercial development, regional mall, eateries
<i>Kings Gun Center</i>	Weapon safety, weapon education classes, weapon maintenance
<i>Main Street</i>	Downtown support, downtown revitalization, downtown event promotion, downtown preservation
<i>Hanford Chamber of Commerce</i>	Promotes balanced business and industrial growth, industrial/business retention, Hanford history preservation
<i>Masonic Temple</i>	Volunteerism, donate to variety of city projects
<i>Koinonia</i>	Ministry, outreach, spiritual education
<i>Tachi-Yokut Tribe</i>	Tachi Palace Casino and Resort, Native-American education and outreach services, Native-American employment services
<i>Rotary of Hanford</i>	Volunteerism, donate to variety of city projects
<i>Soroptimist of Hanford</i>	"S" Club, Child Spree, Live Your Dream awards banquet, Dream It-Be It
<i>Federal and State Programs for Infrastructure</i>	Jail expansion, Homeless Service Center

Table P.1b(3) Key Suppliers, Partners, and Collaborators

P.1b(3)(continued) - What role do they play in your community's work systems, especially in producing and delivering your community's key offerings and resident and other customer support services?

The key suppliers/partners/collaborators provide staff, employment, financial contributions, partnerships, venues, and networking. We have found that within each sector there are silos, and many times stakeholders can be working on similar projects and each is not aware due to lack of partnership and communication. Collaboration and a common agenda is mutually beneficial and necessary for improvement.

P.1b(3)(continued) - What role do they play in enhancing your community's offerings and competitiveness?

By working together on shared common goals and community partnerships, these key suppliers/partners/collaborators provide innovation for the future.

Community Situation

P.2a - COMPETITIVE ENVIRONMENT

P.2a(1) - What is your community's competitive position relative to similar or nearby communities?

Kings County is bordered on the north and northwest by Fresno County, on the east by Tulare County, on the south by Kern County. Each of these other counties share similar economic goals. Agriculture is prevalent for all three counties leading to competitiveness for resources such as water, land, various commodities and work forces. Each county's economic model survives on the distribution of unfinished and finished products it produces. As one of the smallest counties in the Central Valley, Kings is at a lesser competitive position; however, our interconnectedness and ideals make us stronger than our neighbors. Communities have the ability to work together, communicate, and produce quality product due to the networking and familiarity with key players.

COMPETITIVE POSITION			
Kings County	Fresno County	Tulare County	Kern County
About 87% of Kings County's 890,000 acres is agricultural farmland. The gross value of all agricultural crops and products produced during 2017 in Kings County was \$2,066,029,000. Kings County is 10th among California counties in agricultural production. As of January 2019, the population was 150,029.	Fresno County is home to 1.88 million acres of the world's most productive farmland, with agricultural operations covering nearly half of the county's entire land base of 3.84 million acres. As of July 1, 2018, the population was 994,400. The county seat is Fresno, the fifth most populous city in California.	In Tulare County the dairy industry, with sales of milk products, brings in the most revenue for the county, typically more than US\$ 1 billion a year annually. In 2001, Tulare became the most productive county in the U.S. in terms of agricultural revenues, at US\$3.5 billion annually. As of 2017, the population was 464, 493.	Kern County has a large agricultural base and is a significant producer of oil, natural gas, hydro-electric power, solar power, and wind power. The county's economy is heavily linked to agriculture and to petroleum extraction. As of 2017, the population was 893,119.

Table P.2a(1) Competitive Position

P.2a(2) - What key changes, if any, are affecting your community’s competitive situation relating to health, education, the economy, and quality of life, including changes that create opportunities for innovation and collaboration, as appropriate?

Kings County is significantly reliant upon agriculture for its economic stability. Many factors impact the success of crop production. First, natural disasters are not within control but an unseasonable rainstorm when crops are to be harvested can devastate the anticipated income for the year. Lack of rain leads to drought conditions forcing famers to purchase water rights at competitive prices. Increase heat stagnates dairy cows from producing much needed milk for local productions. The weather plays an unpredictable impact towards competitiveness with the delivery of produce. If unfinished goods are not delivered to local manufacturers these companies are forced to slow production down leading to reduction in work force. Additionally, local suppliers and vendors become impacted as a result. Secondly various state and federal mandates impact the economic stability. This year the federal mandated milk pricing in California raised pricing for local business while not significantly increasing revenues for the dairies. Changes in water regulations consistently drive pricing and competitiveness with local farms.

P.2a(3) - What key sources of comparative and competitive data are available to your community?

Kings County is proud to provide the Healthy Communities Institute (HCI) database housed on the Kings Partnership for Prevention website. HCI’s web-based information systems are designed to empower communities to make a true difference by tracking health and quality of life indicators and supplying over 2,000 community-level interventions and policy models. The HCI system provides Kings County with a dashboard of 200+ data indicators (many down to the zip code and census tract) that are continuously updated to help identify areas of need with up-to-date views of community health. The systems provide the community with a “living” and publicly accessible source for the most currently available health and quality of life indicators. Outside of publicly sourced data, the HCI database has the ability to add local data indicators to more completely paint the picture of the community.

P.2a(3) - What limitations affect your community’s ability to obtain or use these data?

While the ability to add local data indicators exists, the reality of getting that data into the system is much more complicated. Local agencies and organizations have to see the long-term value in sharing data in order to justify the short-term commitment to establish the infrastructure. Furthermore, while the data provided on the KPFP website is being used more and more, it is still not accessed and utilized to its potential.

P.2b - STRATEGIC CONTEXT

P.2b - What are your community’s key strategic challenges and advantages in the areas of health, education, the economy, and quality of life?

STRATEGIC ADVANTAGES AND CHALLENGES

HEALTH	EDUCATION	FINANCIAL STABILITY	QUALITY OF LIFE
Challenges include: Asthma, Diabetes, Obesity, Mental Health, Substance Abuse, Homelessness, Poverty, Low Literacy, Access to Healthy food, Access to Care	Challenges include: Truancy, Unincorporated Rural Communities, Low third-grade reading level, Low graduation rate	Challenges include: Affordable housing, Resource connection, Average income, Low graduation rate, Poverty	Challenges include: Safety, Gang Violence, Poverty, Transportation, Affordable housing, Lack of mentor opportunities, Lack of youth activities

<u>Advantages include:</u> County-wide multi-agency approaches are beginning to address health holistically	<u>Advantages include:</u> Local Community Colleges, Trade Schools	<u>Advantages include:</u> Kelly Slater Surf Ranch, Solar farming, Marijuana farming, Prisons, Open land for Business growth	<u>Advantages include:</u> New shopping and dining options, Family bond (help each other), New children’s activities
--	---	---	---

Table P.2b Strategic Advantages and Challenges

P.2c - PERFORMANCE IMPROVEMENT SYSTEM

P.2c - What are the key elements of your community's performance improvement system, including your community's processes for evaluating and improving key community projects and processes?

The County-wide Community Needs Assessment is currently the primary tool used for surveying community perception and identifying gaps. An overall evaluation process is needed and will be developed and implemented through this process.

- Adventist Health conducts a survey every 3 years
- KCAO (Kings County Action Organization) conducts a survey every 2 years.
- Kings County Public Health Department every 5 years
- MHSA (Mental Health) conducts a Strategic Planning Session every 3 years